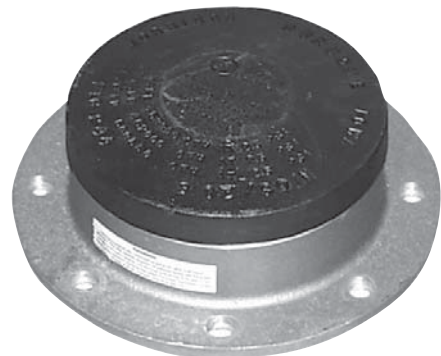


Emergency Vent Model 244

Model 244 Emergency vent (pressure relief only) is used on above ground storage tanks, to help prevent the tank from becoming overpressurized and possibly rupturing if ever exposed to fire.

Vent must be used in conjunction with a "normal vent." Correct application of this vent requires proper vent size and selection for the tank system in order to meet the specific venting capacity.



Emergency Vent Setting Range

Model Numbers	Sizes Available	Connections	Pressure	Flow Capacity
Model 244	2", 3", 4", 6", 8" and 10"	F-NPT, M-NPT and Flanged	11.0 to 69.0 mbar	600 to 22.000 m ³ /h

Materials of Construction

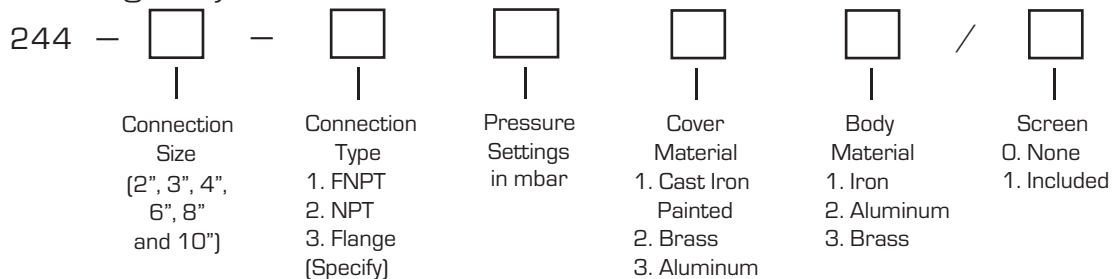
Body Material	Seat and O-ring	Cover Material
Aluminum Iron	Brass Viton	Cast Iron Aluminum

Model Specifications *

Model	Size	Conn.	Setting	Cover	Body	Diameter	Height	Weight	Venting Cap.
244-2-235230	2	NPT	35 mbar	Bass	Brass	76 mm	36 mm	0,5 Kg	600 m ³ /h
244-3-235120	3	NPT	35 mbar	Iron	Alu	120 mm	94 mm	2,7 Kg	1720 m ³ /h
244-4-235120	4	NPT	35 mbar	Iron	Alu	147 mm	170 mm	5,2 Kg	3400 m ³ /h
244-6-335120	6	Flange	35 mbar	Iron	Alu	280 mm	100 mm	8,9 Kg	8510 m ³ /h
244-8-335120	8	Flange	35 mbar	Iron	Alu	257 mm	114 mm	19,0 Kg	14540 m ³ /h
244-10335120	10	Flange	35 mbar	Iron	Alu	407 mm	140 mm	32,2 Kg	22.000 m ³ /h

* This table shows standard models only, for specific settings, capacities and/or materials etc. use the Model Numbering as shown below.

Key to Emergency Vent Model Number



Example:



Indicates an Emergency Vent with 6", NPT Thread and a Pressure Setting of 27 mbar. The Cover is manufactured from Brass and the body is manufactured from Aluminum and includes a mesh Screen.